

Wilson Chap. 9: Resource Sharing

Remember to learn the terminology on pages 125-126.

Do the written assignment on iCollege.

Resource Sharing

- Resource Sharing = sharing of materials among libraries
- Because different libraries use different computer systems, a standard must be used to share materials between libraries.

ILL = Interlibrary Loan

- resource sharing among libraries that have no direct association with one another
- net lender = library that lends more materials than borrows
- net borrower = library that borrows more materials than lends
- In general, it is better to be a net lending library. The library is satisfying their customers, because they are not borrowing too much. Plus, they have a good collection of materials, because many libraries are asking for their books.

ILL Schemes

- Libraries may participate in different ILL systems
- the big one in the United States is OCLC's ILL service: <http://www.oclc.org/>
(OCLC = Online Computer Library Center)
- OCLC provides the software that allows the ILL request to be sent and then received by libraries willing to fill the request.

Electronic ILL

- A frequent question you may get at your library is: If this article is available from an online database (which my library does not subscribe to), why can't I get a journal article electronically?
- The short answer to this is that the lending library must adhere to the limitations placed upon them by the database vendor.
- Most database vendors require that access to the database be restricted to authenticated patrons or patrons who are on-site at the library.

Electronic ILL (page 2)

- Therefore, in most cases, an article requested via ILL must be owned in print by the lending library.
- The lending library then makes a copy of the article and sends it through the mail like it was a book.
- In theory, a lending library can scan in the article then send it via email to the borrowing library. This is not frequently done because this process would be new to most libraries who would need the equipment to do so.

ILL Management

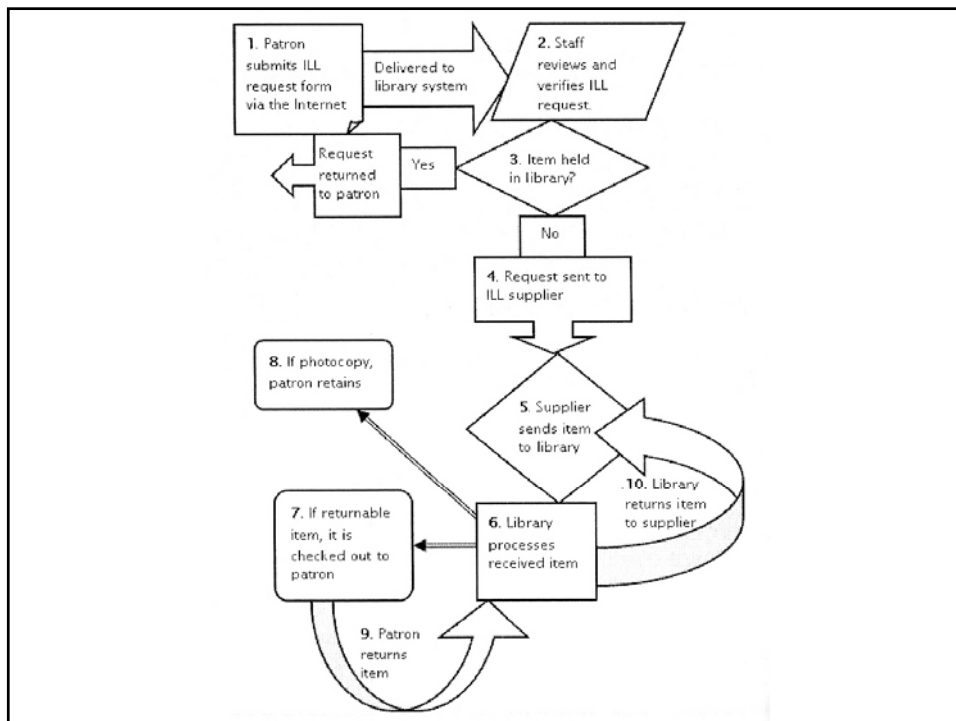
- could be part of your library management system or could be a separate system
- a “good” system should:
 1. receive ILL requests electronically via the library’s website
 2. generate ILL records
 3. send requests to ILL suppliers
 4. interact with the local patron database and circulation module
 5. provide print options for sending requests
 6. generate statistics on ILL transactions

ILL Procedure

1. Patron sends ILL request via paper, email, form on the web, etc.
2. Request is converted into an ILL record. (The request may be reviewed and verified by library staff.)
3. The local catalog is checked to ensure that the item is not available
4. Request is sent to ILL supplier (lending library)
5. Supplier (lending library) sends item to the (borrowing) library

ILL Procedure (page 2)

6. Library processes the item
7. Item is checked out to the patron.
8. If item is a photocopy, the item is given to patron with no due date .
9. Patron returns item and it is checked in.
10. Item is prepared and returned to the lending library.



Outgoing ILLs

To lend an ILL:

1. receive requests
2. search shelves for the items
3. checkout items and send out

Consortia Borrowing

- borrowing among libraries that work together to share resources
- can be:
 1. geographically based - e.g. the University System of Georgia Libraries use GIL Express to share items; PINES libraries
 2. subject based - e.g. medical libraries may share items
- allows borrowing to be done without using ILL procedure
- consortia borrowing procedures will be set up by each consortia

Union Catalogs

- There are many terms to describe the process of borrowing among consortia libraries
- Union catalog = a collective database of holdings by all members of the consortia. E.g. Universal GIL catalog (<http://giluc.usg.edu>)
- Most union catalogs do not exist in “reality” on a server; instead they are made “on-the-fly” by searching each member when a query is entered.
- Other terms used: Universal borrowing, direct consortial borrowing, direct access borrowing

ILL Developments

Possible future developments:

1. use a direct system to send ILL requests between the libraries instead of going through OCLC
2. patrons send requests directly to the ILL suppliers