

Graphing Linear Eq. in Two Variables - Calculator

Eq must be in form
 $y = mx + b$.

Graph on calculator
should show x &
y-intercepts (if any).

① $2x + y = 4$

By hand

x	y	(x,y)
2	0	(2,0) ✓
0	4	(0,4) ✓

$$2x + 0 = 4$$

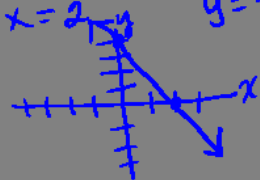
$$2x = 4$$

$$x = 2$$

$$2(0) + y = 4$$

$$0 + y = 4$$

$$y = 4$$



on calculator

$$2x + y = 4$$

$$-2x \quad -2x$$

$$y = -2x + 4$$

$\boxed{Y=}$

Graph
TRACE

Graph:

$$y = \frac{2}{3}x - 6$$

X	y	(x,y)
0	$\frac{2}{3}(0) - 6 = -6$	(0, -6)
3	$\frac{2}{3}(3) - 6 = -4$	(3, -4)
6	$\frac{2}{3}(6) - 6 = -2$	(6, -2)
9	$\frac{2}{3}(9) - 6 = 0$	(9, 0)

